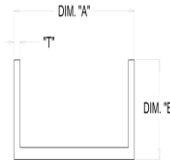


CHANNELS PROFILÉS EN U

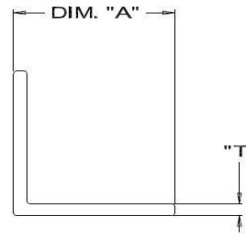


SECTION NO.	DIMENSION IN MM		DIMENSIONS EN MM	WEIGHT	FACTOR	DIMENSIONS IN INCHES/POUCES		
	A	B	T			A	B	T
746	9.53	9.53	1.57	0.104	513	0.375	0.375	0.062
3264	12.7	12.7	1.57	0.149	496	0.500	0.500	0.062
3286	12.7	12.7	2.39	0.215	325	0.500	0.500	0.094
3265	12.7	12.7	3.18	0.274	257	0.500	0.500	0.125
3270	12.7	19.05	1.57	0.206	479	0.500	0.750	0.062
3285	12.7	19.05	3.18	0.384	257	0.500	0.750	0.125
3271	12.7	25.4	1.57	0.258	479	0.500	1.000	0.062
20498	12.7	12.7	1.27	0.123	557	0.500	0.500	0.050
19186	14.14	19.05	1.57	0.211	496	0.557	0.750	0.062
5070	15.24	12.7	1.27	0.133	599	0.600	0.500	0.050
3253	15.88	7.92	1.57	0.122	496	0.625	0.312	0.062
8745	15.88	15.88	1.19	0.161	590	0.625	0.625	0.047
19677	16.04	25.4	1.27	0.222	546	0.631	1.000	0.050
983	16.04	15.87	1.27	0.156	636	0.631	0.625	0.050
3292	16.1	12.7	1.57	0.326	239	0.634	0.500	0.062
3283	19.05	12.7	3.18	0.331	257	0.750	0.500	0.125
3268	19.05	19.05	1.57	0.232	479	0.750	0.750	0.062
3287	19.05	19.05	2.36	0.337	325	0.750	0.750	0.093
4039	19.05	19.05	3.18	0.44	239	0.750	0.750	0.125
4318	19.43	38.1	1.78	0.446	428	0.765	1.500	0.070
3263	19.81	22.61	1.65	0.271	462	0.780	0.890	0.065
19686	20.32	34.8	1.5	0.354	488	0.800	1.370	0.059
4510	22.23	25.4	1.57	0.301	462	0.875	1.000	0.062
982	22.3	15.9	1.65	0.128	502	0.878	0.626	0.065
3261	22.66	6.35	1.02	0.092	752	0.892	0.250	0.040
19196	23.97	12.7	1.27	0.162	674	0.944	0.500	0.050
3255	25.4	12.7	1.02	0.136	770	1.000	0.500	0.040
3284	25.4	19.05	3.18	0.496	239	1.000	0.750	0.125
3272	25.4	25.4	3.18	0.605	239	1.000	1.000	0.125
3298	25.4	19.05	2.38	0.38	317	1.000	0.750	0.094
4410	28.58	25.4	1.47	0.307	513	1.125	1.000	0.058
3258	31.75	12.7	4.75	0.617	171	1.250	0.500	0.187
6024	31.75	15.88	3.18	0.495	241	1.250	0.625	0.125
3547	31.75	31.75	3.18	0.781	231	1.250	1.250	0.125
13885	38.1	12.7	1.57	0.258	479	1.500	0.500	0.062
4083	38.1	15.88	1.27	0.231	599	1.500	0.625	0.050
3262	38.1	25.4	3.18	0.741	239	1.500	1.000	0.125
3299	38.1	19.05	3.18	0.605	225	1.500	0.750	0.125
11109	44.45	25.4	3.18	0.769	239	1.750	1.000	0.125
3274	50.8	19.05	3.18	0.714	239	2.000	0.750	0.125
3275	50.8	25.4	3.18	0.824	239	2.000	1.000	0.125
3293	63.5	25.4	3.18	0.893	239	2.500	1.000	0.125
3291	63.5	41.28	6.35	2.308	120	2.500	1.625	0.250
19608	63.5	38.1	3.175	0.824	246	2.500	1.500	0.125
3289	76.2	25.4	3.18	1.043	239	3.000	1.000	0.125
15903	76.2	38.1	6.35	1.204	137	3.000	1.500	0.250
3266	76.2	38.1	9.53	3.46	86	3.000	1.500	0.375
13051	101.6	44.45	3.96	1.661	222	4.000	1.750	0.156
3279	101.6	50.8	3.05	1.639	239	4.000	2.000	0.120
3282	127	50.8	4.75	2.843	154	5.000	2.000	0.187

*INDICATES ROUND FILLET
 **INDICATES ROUND CORNERS
 *INDIQUE UN FILLET ARRONDI
 **INDIQUE DES ANGLES ARRONDIS

EQUAL LEG ANGLES

CONRNIÈ RES À ÉGALES

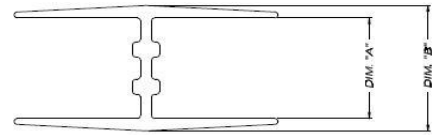


SECTION NO. N° DE SECTION	DIMENSION IN MM		WEIGHT KG/M POIDS KG/M	FACTOR FACTEUR	DIMENSIONS IN INCHES/POUCES	
	A	T			A	T
1038	9.53	1.57	0.076	496	0.375	0.062
9017	12.7	1.27	0.083	616	0.500	0.050
705	12.7	1.57	0.103	513	0.500	0.062
3157	12.7	3.18	0.192	274	0.500	0.125
3151	15.88	1.57	0.131	479	0.625	0.062
707	19.05	1.57	0.156	496	0.750	0.062
3153	19.05	3.18	0.302	257	0.750	0.125
3169	20.62	1.57	0.17	496	0.812	0.062
709	25.4	1.57	0.212	496	1.000	0.062
3154	25.4	3.18	0.413	239	1.000	0.125
1757	25.4	4.45	0.563	188	1.000	0.175
4067	31.75	2.39	0.393	325	1.250	0.094
3161	31.75	3.18	0.522	291	1.250	0.125
9354	38.1	3.05	0.606	257	1.500	0.120
3168	38.1	4.75	0.924	171	1.500	0.187
1238	38.1	6.1	1.165	137	1.500	0.240
*3171	38.1	6.35	1.232	120	1.500	0.250
1281	44.45	5.97	1.35	137	1.750	0.235
1044	50.8	3.05	0.82	239	2.000	0.120
3165	50.8	6.35	1.646	120	2.000	0.250
3172	50.8	12.7	3.077	68	2.000	0.500
3166	63.5	36.35	2.095	137	2.500	1.431
3155	76.2	6.35	2.529	120	3.000	0.250
3167	76.2	12.7	-	-	3.000	0.500
*3167	76.2	9.53	-	-	3.000	0.375
3174	76.2	9.53	-	-	3.000	0.375
18428	25.42	2.54	0.334	-	1.001	0.100
19287	23.81	3.75	0.379	-	0.937	0.148
3176	12.7	2.38	0.149	-	0.500	0.094
3177	19.05	2.39	0.231	-	0.750	0.094
19785	44.45	3.18	0.742	-	1.750	0.125
3549	50.8	50.8	1.256	161	2	2

*INDICATES ROUND FILLETS

*INDIQUE DES FILETS ARRONDIS

"H" SECTIONS PROFILÉS EN H



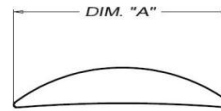
SECTION NO. N° DE SECTION	DIMENSION IN MM	DIMENSIONS EN	WEIGHT KG/M POINDS KG/M	FACTOR FACTEUR	DIMENSIONS IN INCHES	
	A	B			A	B
7019	7.92	11.73	0.282	496	0.312	0.462
7025	9.53	12.7	0.216	633	0.375	0.500
7027	11.1	14.27	0.224	633	0.437	0.562
7022	12.7	15.88	0.229	633	0.500	0.625

*SAWTOOTH

*DENTS DE SCIE

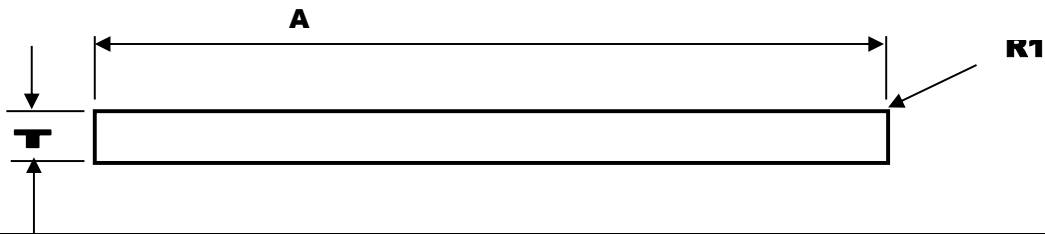
HALF OVALS

DEMI-OVALES



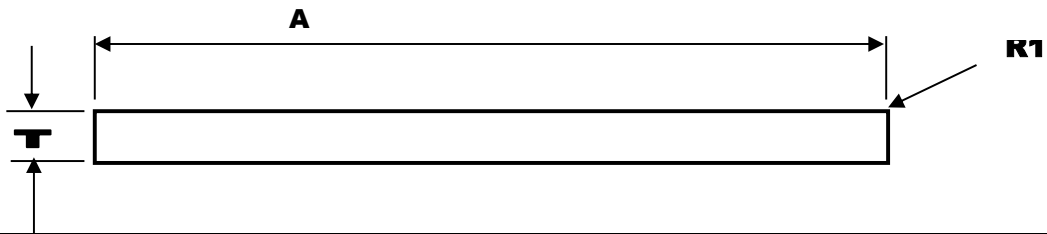
SECTION NO. N° DE	DIM. A DIMENSIONS A	WEIGHT KG/M POINDS KG/M	FACTOR FACTEUR	DIMENSIONS IN INCHES
760	9.53	0.058	393	0.375
761	12.7	0.086	325	0.500
762	17.48	0.113	325	0.688
764	19.05	0.173	239	0.750

RECTANGULAR BARS BARRES RECTANGULAIRES



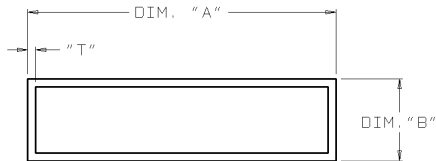
SECTION NO.	DIMENSIONS IN MM		DIMENSIONS IN INCHES/POUCES			WEIGHT KG/M
No. De SECTION	A	T	A	T	R1	POIDS KG/M
3000	4.57	3.18	0.18	0.13	0.18	0.13
4111	6.86	4.06	0.27	0.16	0.27	0.16
3005	9.53	1.57	0.38	0.06	0.38	0.06
3146	9.53	3.18	0.38	0.13	0.38	0.13
3307	9.53	3.96	0.38	0.16	0.38	0.16
4122	10.03	3.18	0.39	0.13	0.39	0.13
1043	11.53	1.65	0.45	0.06	0.45	0.06
6001	11.89	6.35	0.47	0.25	0.47	0.25
3306	12.70	1.65	0.50	0.06	0.50	0.06
712	12.70	2.36	0.50	0.09	0.50	0.09
* 3304	12.70	3.18	0.50	0.13	0.50	0.13
7003	12.70	3.18	0.50	0.13	0.38	0.11
* 3148	12.70	3.18	0.50	0.13	0.50	0.13
* 7004	12.70	4.75	0.50	0.19	0.50	0.19
3008	12.70	4.75	0.50	0.19	0.50	0.17
3149	12.70	4.45	0.50	0.18	0.50	0.18
3042	12.70	9.53	0.50	0.38	0.50	0.38
8058	15.85	2.29	0.62	0.09	0.62	0.090
3024	15.88	3.18	0.63	0.13	0.63	0.125
8003	15.88	3.25	0.63	0.13	0.63	0.128
3044	15.88	9.53	0.63	0.38	0.63	0.375
10502	17.45	7.92	0.69	0.31	0.69	0.312
713	19.05	2.36	0.75	0.09	0.75	0.093
* 3302	19.05	3.18	0.75	0.13	0.75	0.125
3016	19.05	3.18	0.75	0.13	0.75	0.125
3150	19.05	4.75	0.75	0.19	0.75	0.187
3001	19.05	12.70	0.75	0.50	0.75	0.500
3017	22.23	3.18	0.88	0.13	0.88	0.125
18338	22.23	3.18	0.88	0.13	1.59	0.186
18096	22.35	4.06	0.88	0.16	1.52	0.243
714	25.40	2.36	1.00	0.09	1.00	0.093
3019	25.40	3.18	1.00	0.13	1.00	0.125
3007	29.34	7.62	1.16	0.30	-	0.596
9871	38.10	4.62	1.50	0.18	1.50	0.182
3308	38.10	3.18	1.50	0.13	-	0.331
18095	38.10	3.18	1.50	0.13	1.59	0.331
3034	38.10	6.35	1.50	0.25	-	0.660
3002	38.10	9.53	1.50	0.38	-	0.988
3127	38.10	12.70	1.50	0.50	-	1.319
3139	38.10	19.05	1.50	0.75	-	1.979

RECTANGULAR BARS BARRES RECTANGULAIRES



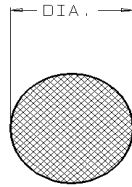
SECTION NO.	DIMENSIONS IN MM		DIMENSIONS IN INCHES/POUCES			WEIGHT KG/M
No. De SECTION	A	T	A	T	R1	POIDS KG/M
13054	38.10	19.05	1.50	0.75	1.50	0.750
3014	41.28	6.35	1.63	0.25	-	0.714
3020	41.28	6.35	1.63	0.25	1.63	0.250
6020	44.45	2.54	1.75	0.10	-	0.301
3035	44.45	6.35	1.75	0.25	-	0.769
3128	44.45	6.35	1.75	0.25	-	1.553
3045	44.45	9.53	1.75	0.38	-	1.153
3134	44.45	2.54	1.75	0.10	1.75	0.100
3143	50.80	1.60	2.00	0.06	-	0.221
4171	50.80	3.18	2.00	0.13	-	0.440
3147	50.80	3.96	2.00	0.16	-	0.548
3010	50.80	4.75	2.00	0.19	-	0.659
3015	50.80	6.35	2.00	0.25	-	0.879
3046	50.80	9.53	2.00	0.38	-	1.319
3023	50.80	25.40	2.00	1.00	-	3.516
10279	63.18	9.65	2.49	0.38	-	1.662
3036	63.50	6.35	2.50	0.25	-	1.097
6021	69.85	4.70	2.75	0.19	-	0.867
3003	76.20	4.75	3.00	0.19	-	0.983
3037	76.20	6.35	3.00	0.25	-	1.319
3047	76.20	9.53	3.00	0.38	-	1.979
3021	76.20	19.05	3.00	0.75	-	3.963
3144	76.20	38.10	3.00	1.50	3.00	1.500
5711	88.90	23.60	3.50	0.93	3.50	0.929
5712	88.90	31.75	3.50	1.25	3.50	1.250
7446	101.60	25.40	4.00	1.00	-	7.033
18387	110.00	3.00	4.33	0.12	0.38	0.899
8002	120.65	3.25	4.75	0.13	4.75	0.128
3022	152.40	6.35	6.00	0.25	6.00	0.250

RECTANGULAR TUBING



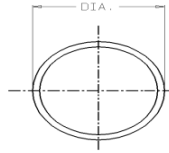
SECTION NO.	DIMENSION IN MM			WEIGHT KG/M	DIMENSIONS IN INCHES/POUCES		
No. De SECTION	A	B	T	POIDS KG/M	A	B	T
8994	38.1	25.2	1.59	0.498	1.500	0.992	0.063
3465	38.1	25.4	2.41	0.772	1.500	1.000	0.095
17599	45	12.9	1.60	0.452	1.772	0.508	0.063
3469	50.8	19.05	2.39	0.848	2.000	0.750	0.094
3481	50.8	25.4	2.41	0.939	2.000	1.000	0.095
3424	50.8	25.4	1.65	0.651	2.000	1.000	0.065
3418	50.8	38.1	3.05	1.376	2.000	1.500	0.120
8760	51.31	19.3	1.52	0.560	2.020	0.760	0.060
17600	70	12.9	1.60	0.665	2.756	0.508	0.063
3660	76.2	25.4	1.57	0.844	3.000	1.000	0.062
3483	76.2	50.8	3.05	2.006	3.000	2.000	0.120
23858	76.2	38.1	3.18	1.867	3	1.5	0.125
3477	101.6	25.4	3.05	2.009	4.000	1.000	0.120
3479	101.6	38.1	3.05	2.223	4.000	1.500	0.120
3487	101.6	44.45	2.41	1.857	4.000	1.750	0.095
3428	101.6	44.45	3.05	2.324	4.000	1.750	0.120
3427	101.6	50.8	3.05	2.430	4.000	2.000	0.120
23577	101.6	19.05	3.18	1.978	4	0.75	0.125
3429	104.78	44.45	3.18	2.372	4.125	1.750	0.125
3484	114.3	44.45	2.79	2.533	4.500	1.750	0.110
3437	114.3	50.8	4.75	4.023	4.500	2.000	0.187
3527	127	50.8	3.18	2.967	5	2	0.125

ROUND ROD



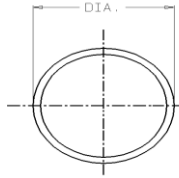
SECTION NO.	DIA. (MM)	WEIGHT KG/M	FACTOR	DIA (INCHES)
3515	3.18	0.022	479	0.125
3230	6.35	0.086	222	0.250
3248	7.92	0.134	188	0.312
3227	9.53	0.195	153	0.375
8920	10.00	0.214	147	0.394
3226	11.10	0.264	136	0.437
15848	12.70	0.345	116	0.500
975	13.72	0.402	102	0.540
3540	15.88	0.539	93	0.625
976	17.15	0.629	85	0.675
3246	20.62	0.910	68	0.812
977	21.34	0.974	68	0.840
3235	22.23	1.056	68	0.875
3236	25.40	1.381	51	1.000
978	26.67	1.524	51	1.050
3052	27.08	1.053	54	1.066
3247	30.15	1.947	51	1.187
3244	30.96	2.056	51	1.219
3250	31.75	2.157	46	1.250
979	33.40	2.385	51	1.315
980	42.93	3.944	34	1.690
3245	43.66	4.075	34	1.719
3240	44.45	4.229	34	1.750
3229	47.63	4.865	34	1.875
3228	50.80	5.528	34	2.000

ROUND TUBING



SECTION NO.	DIA. (MM)	THICKNESS (MM)	WEIGHT KG/M	DIA (INCH)	THICKNESS in INCHES
724	7.92	1.65	0.089	0.312	0.065
3397	11.05	1.27	0.107	0.435	0.050
3398	12.7	1.24	0.122	0.500	0.049
725	12.7	1.65	0.156	0.500	0.065
3387	15.88	1.24	0.156	0.625	0.049
3399	15.88	1.47	0.182	0.625	0.058
8215	16.66	1.98	0.250	0.656	0.078
3378	19.05	1.24	0.191	0.750	0.049
3385	19.05	1.42	0.215	0.750	0.056
726	19.05	1.65	0.249	0.750	0.065
3388	22.07	2.84	0.468	0.869	0.112
3384	22.23	1.24	0.225	0.875	0.049
3383	22.23	1.45	0.261	0.875	0.057
19958	22.22	1.65	0.291	0.875	0.065
3391	22.99	3.3	0.557	0.905	0.130
3375	25.4	1.24	0.256	1.000	0.049
23164	25.4	1.47	0.302	1.000	0.058
727	25.4	1.65	0.334	1.000	0.065
3386	25.4	1.98	0.399	1.000	0.078
3371	25.4	2.38	0.469	1.000	0.094
13458	27.18	1.65	0.361	1.070	0.065
3392	27.43	3.94	0.791	1.080	0.155
3393	28.32	2.79	0.609	1.115	0.110
3400	31.75	1.27	0.332	1.250	0.050
3396	31.75	2.41	0.606	1.250	0.095
21106	31.75	3.05	0.749	1.250	0.120
3389	38.1	1.24	0.392	1.500	0.049
728	38.1	1.65	0.514	1.500	0.065
3390	50.8	1.57	0.665	2.000	0.062
23125	63.5	2.00	1.053	2.500	0.079

Schedule 40 Pipe

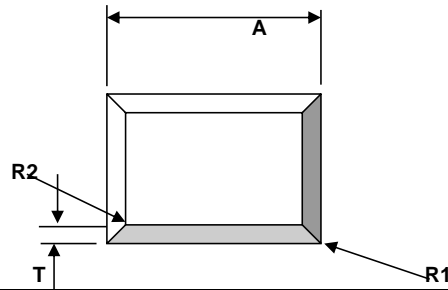


Stated	Actual	Die #	Wall	Pounds
1/2	0.840	3805	0.109	0.293
3/4	1.050	3804	0.113	0.391
1	1.315	3803	0.133	0.581
1 1/4	1.660	3802	0.14	0.786
1 1/2	1.900	3801	0.145	0.94
2	2.375	3800	0.154	1.269
3	3.500	3807	0.216	2.63
4	4.500	3809	0.237	3.745

Schedule 80 Pipe

Stated	Actual	Die #	Wall	Pounds
1/2	0.125	19756	2.41	0.163

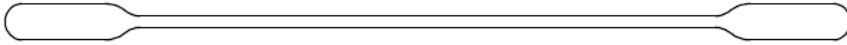
SQUARE TUBING



SECTION NO. No. De SECTION	DIMENSIONS IN MM		WEIGHT KG/M		DIMENSIONS IN INCHES/POUCES		
	A	T	R1	R2	POIDS KG/M	A	T
3413	12.7	1.24	3.96	2.72	0.155	0.500	0.049
3402	12.7	1.57			0.192	0.500	0.062
3403	19.05	1.57			0.302	0.750	0.062
20537	19.05	1.397	-	-	0.269	0.750	0.055
3511	25.4	1.65			0.304	1.000	0.065
722	25.4	1.24	3.96	2.72	0.316	1.000	0.049
3419	25.4	1.27	-	-	0.337	1.000	0.050
3416	25.4	1.57	-	-	0.410	1.000	0.062
3420	25.4	1.65	1.57	0.76	0.423	1.000	0.065
3520	25.4	2.29	3.18	1.59	0.557	1.000	0.090
3404	25.4	2.39			0.599	1.000	0.094
3510	25.4	3.05			0.719	1.000	0.120
8993	25.4	1.59	-	-	0.387	1.000	0.063
3541	25.4	1.58	2.36	0.79	0.399	1.000	0.062
3405	31.75	1.27	-	-	0.413	1.250	0.050
4300	31.75	2.29			0.734	1.250	0.090
20319	31.75	1.65	3.18	1.52	0.523	1.250	0.065
3407	38.1	1.27	-	-	0.510	1.500	0.050
3412	38.1	1.91	-	-	0.752	1.500	0.075
3425	38.1	2.38			0.927	1.500	0.094
3406	38.1	2.39	-	-	0.930	1.500	0.094
3519	38.1	1.65	3.96	2.31	0.404	1.500	0.065
23012	38.1	2.95	-	-	1.130	1.500	0.116
3521	41.28	4.78	4.78	1.59	1.852	1.625	0.188
3417	50.8	2.29	-	-	1.209	2.000	0.090
3408	50.8	3.05	-	-	1.585	2.000	0.120
3514	50.8	3.18	5.00	1.82	1.600	2.000	0.125
3522	63.5	6.35	4.78	1.59	3.908	2.500	0.250
3523	76.2	4.78	4.78	1.57	3.672	3.000	0.188
23467	100.24	3.065			3.244	3.946	0.121

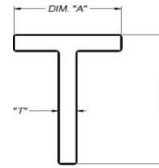
STREET SIGNS

PLAQUES INDICATRICES



SECTION NO. N° DE	WEIGHT KG/M POINDS KG/M	FACTOR FACTEUR	PERIMETER MM
5311	1.368	239	325.704
5312	1.025	205	212.496

TEE SECTIONS PROFILÉS EN T

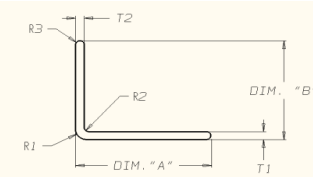


SECTION NO. N° DE	DIMENSION IN MM		DIMENSIONS EN MM	WEIGHT KG/M	FACTOR FACTEUR	DIMENSIONS IN INCHES		
	A	B	T			A	B	T
4048	19.05	25.4	3.18	0.358	239	0.750	1.000	0.125
3602	25.4	25.4	3.18	0.411	257	1.000	1.000	0.125

*INSIDE FILLETS 6.35 RADIUS
*FILETS INTÉRIEURS À RAYON DE 6.35 MM

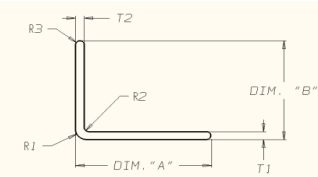
UNEQUAL LEG ANGLES

CORNIÈRES À INÉGALES



DIE NO.	DIM. "A"	DIM. "B"	T1	T2	R1	R2	R3	KG/M
18150	12.70	5.59	2.54	1.52	1.52			0.097
18478	12.70	6.50	1.57	1.57	1.00	1.00		0.075
20473	15.88	6.43	1.78	1.40				0.089
7693	17.02	9.14	1.27	1.27		1.90	1.02	0.082
984	19.05	12.70	1.57	1.57	0.50			0.128
3202	19.05	12.70	4.75	4.75				0.350
8623	19.05	12.70	1.59	1.59				0.131
12251	19.05	9.53	1.57	1.57				0.116
20774	19.05	12.70	1.59	1.59				0.131
20301	22.22	6.35	1.27	1.27				0.093
7960	22.86	4.45	1.27	1.27				0.090
18167	24.61	8.73	3.18	3.18	5.56	2.38		0.241
3208	25.40	12.70	3.18	3.18				0.302
3209	25.40	19.05	3.18	3.18				0.362
5244	25.40	15.88	1.65	1.65				0.177
8757	25.40	16.89	2.92	2.92				0.314
9691	25.40	9.53	1.27	1.27			0.79	0.116
3542	25.40	19.05	1.57	1.57				0.184
18169	25.40	19.05	2.38	2.38		3.18	2.38	0.273
18429	25.40	12.70	2.54	2.54	2.39			0.243
20455	25.40	19.05	4.76	4.76				0.452
18182	28.58	25.40	3.18	3.18		3.18	1.52	0.443
3204	30.15	26.97	4.75	4.75				0.678
18430	30.48	20.32	2.54	2.54	7.62	5.08		0.316
3205	31.75	25.40	2.38	2.38		3.18	2.38	0.373
9401	31.75	19.05	2.39	2.39				0.314
18132	31.75	25.40	3.18	3.18		3.18	1.59	0.466
18155	31.75	28.58	3.18	3.18				0.495
23360	31.75	22.23	6.35	3.18				0.685
23477	34.30	20.50	3.00	4.66		3.00		0.523
18063	35.05	25.40	3.05	3.05		3.05	1.27	0.480
18366	35.05	17.78	3.05	3.05		6.35	9.53	0.413
18085	37.69	6.35	2.39	4.78	1.57	1.57	0.79	0.294
3200	38.10	25.40	6.35	6.35				0.989
3211	38.10	25.40	3.18	3.18				0.523
3212	38.10	31.75	3.18	3.18				0.577
3528	38.10	19.05	3.18	3.18				0.467
4301	38.10	25.40	1.60	1.60				0.262
14879	38.10	25.40	2.03	2.03				0.341
18144	38.10	25.40	3.97	3.97		3.97	1.98	0.648
18145	38.10	25.40	4.76	4.76		4.76	2.38	0.770
18149	38.10	12.70	4.78	4.78		3.05	0.76	0.603
18190	38.10	17.27	2.03	2.03	2.03	1.52	0.76	0.294
18364	38.10	19.05	3.18	3.18		3.18		0.473
18563	38.10	32.00	2.03	2.03	4.06	2.03		0.370
18576	38.10	25.40	3.18	3.18	4.00	7.18		0.502
18432	40.64	30.48	2.54	2.54	7.62	5.08		0.452
4302	44.45	19.05	2.29	2.29		2.39		0.384
7100	44.45	17.02	9.65	9.65				1.363
7557	44.45	6.35	3.18	3.18				0.412
18181	44.70	35.05	4.57	4.57		2.29	0.76	0.939
18466	46.48	40.13	2.03	2.03	5.08	3.05		0.459
9430	48.26	22.22	1.27	1.27				0.241
18645	49.22	9.83	1.27	1.27	3.18	1.91		0.193
3203	50.80	38.10	4.78	4.78				1.095
3213	50.80	25.40	3.18	3.18				0.632
3701	50.80	25.40	4.75	4.75				0.621

**UNEQUAL LEG
ANGLES** **CORNIÈRES À
INÉGALES**



DIE NO.	DIM. "A"	DIM. "B"	T1	T2	R1	R2	R3	KG/M
4927	50.80	38.10	1.57	1.57				0.374
7162	50.80	38.10	2.54	2.54				0.597
18262	50.80	44.45	6.35	6.35		6.35		1.531
18330	50.80	31.75	4.76	4.76		4.76	3.18	1.017
18334	50.80	31.75	3.18	3.18		4.76	3.18	0.682
19858	50.80	22.22	6.35	4.76	3.18	1.50	3.18	1.066
20124	50.80	28.40	3.00	3.00				0.623
8733	58.74	38.1	4.76	4.76				1.195
3216	63.50	38.10	6.35	6.35				1.648
8732	63.5	38.1	4.76	4.76				1.257
18306	63.5	44.45	4.76	4.76		4.76	4.76	1.328
18333	63.5	25.4	3.25	3.25	1.52	1.52		0.760
20416	64.00	25.00	1.98	1.98		13.00	0.99	0.272
7800	68.00	25.00	1.98	1.98		13.00	1.19	0.600
7781	70.00	33.00	2.00	2.00		14.00		0.657
23959	70.99	25.40	4.75	4.75		3.96		1.197
3220	76.20	50.80	3.18	3.18				1.072
3221	76.20	50.80	6.35	6.35				2.086
18168	76.2	38.1	4.76	4.76		6.35	4.76	1.423
18322	76.2	38.1	4.76	4.76		6.35		1.418
18323	76.2	63.5	2.54	2.54		3.18		0.948
20076	77.80	27.00	1.60	1.60				0.451
18316	79.38	50.8	4.75	4.758		4.75	4.75	1.609
18443	79.85	60.44	7.94	6.35	5.00	2.50	2.50	2.612
18163	82.55	38.1	3.18	3.18		4.76		1.030
3222	101.60	25.40	3.18	3.18				1.071
3223	101.60	50.80	3.18	3.18				1.291
20082	103.20	27.10	1.60	1.60				0.590
18579	103.63	78.23	2.03	2.03	4.06	12.19		1.074
7525	114.30	50.80	9.65	9.65	6.35	1.52	6.35	3.777
3175	127.00	76.20	9.53	9.53		9.53	9.53	4.982
18159	130.05	25.4	4.06	4.06		4.57		1.688

Saddle-Type Thresholds

Seuils a recouvrement



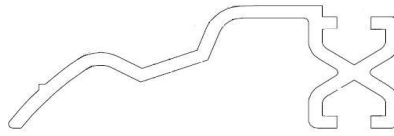
SECTION NO. N° DE SECTION	DIMENSION IN MM		WEIGHT T KG/M	FACTOR FACTEUR	DIMENSIONS IN INCHES/POUCES	
	A	B			A	B
700	63.5	9.5	0.604	265	2.500	0.375
702	101.6	12.7	?	?	4.000	0.500
703	127	12.7	?	?	5.000	0.500
704	152	12.7	1.991	182	6.000	0.500

Door Sweeps Languettes de portes



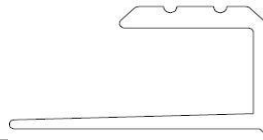
SECTION NO. N° DE SECTION	DIMENSION IN MM DIMENSIONS EN MM		WEIGHT KG/M POINDS	FACTOR FACTEUR	DIMENSIONS IN INCHES/POUCES	
	A	B			A	B
4106	29.85	5.16	0.115	790	1.175	0.203
4028	19.05	5.16	0.082	712	0.750	0.203

Thresholds Seuils



SECTION NO. N° DE SECTION	DIMENSION IN MM DIMENSIONS EN MM		WEIGHT KG/M POUNDS	FACTOR FACTEUR	DIMENSIONS IN INCHES/POUCES	
	A	B			A	B
814	34.9	12.7	-	-	1.374	0.500
811	38.1	12.7	-	-	1.500	0.500
818	88.9	22.2	-	-	3.500	0.874

J-Mouldings Moulure en J



SECTION NO. N° DE SECTION	DIMENSION IN MM	WEIGHT KG/M POINDS KG/M	FACTOR FACTEUR	DIMENSIONS IN INCHES/POUCES
	A			A
981	7.2	0.127	623	0.283
985	7.9	0.129	620	0.311
991	11.1	0.141	658	0.437